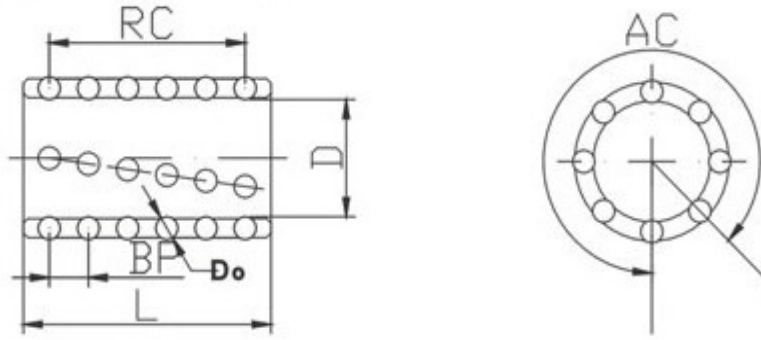


Spring-Die Mould Part Industry Company Limited



Standard Ball Cage 标准型钢珠套



Common steel ball specification

φ 1.0	φ 1.5	φ 2 (2.5)	φ 3	φ 3.176	φ 4	φ 4.76	φ 5	φ 6	φ 6.35
-------	-------	-----------	-----	---------	-----	--------	-----	-----	--------

Specification D*L	Guide post diameter	Length	Hole number (AC)	Row Number (RC)	Steel Ball Diameter (Do)	Steel Ball Number (Balls)	Stell Ball Distance (BP)
5*10	5	10	10	4	1	40	2.2
5*20		20	10	8	1	80	
6*20	6	20	10	8	1	80	2.2
6*30		30	10	12	1	120	
10*35	10	35	10	8	2	80	3.5
10*40		40	10	9	2	90	
12*30	12	30	12	7	2	84	3.5
12*40		40	12	9	2	108	
16*30	16	30	10	11	2	110	2.3
16*35		35	10	13	2	130	
16*30		30	12	5	3	60	5.5
16*35		35	12	6	3	72	
18*40	18	40	12	6	3	72	5.5
18*50		50	12	8	3	96	
19*50	19	50	12	8	3	93	5.5
19*60		60	12	10	3	120	
20*50	20	50	12	8	3	96	5.5
20*60		60	12	10	3	120	
22*50	22	50	14	8	3	112	5.5
22*60		60	14	10	3	140	
25*50	25	50	14	8	3	112	5.5
25*60		60	14	10	3	140	
25*70		70	14	12	3	168	
28*50	28	50	16	8	3	128	5.5
28*60		60	16	10	3	160	
28*70		70	16	12	3	192	
28*80		80	16	13	3	208	

Specificati on D*L	Guide post diamater	Length	Hole number (AC)	Row Number (RC)	Steel Ball Diameter(Do)	Steel Ball Number (Balls)	Stell Ball Distance(BP)
28*60	28	60	14	8	4	112	6.5
28*70		70	14	10	4	140	
28*80		80	14	11	4	154	
31*50	31	50	16	7	4	112	6.5
31*60		60	16	8	4	128	
31*70		70	16	10	4	160	
31*80		80	16	11	4	176	
32*50	32	50	16	7	4	112	6.5
32*60		60	16	8	4	128	
32*70		70	16	10	4	160	
32*80		80	16	11	4	176	
36*50	36	50	16	6	4	96	7
36*60		60	16	8	4	128	
36*70		70	16	9	4	144	
36*80		80	16	10	4	160	
38*50	38	50	16	5	5	80	8
38*60		60	16	7	5	112	
38*70		70	16	8	5	128	
38*80		80	16	9	5	144	
38*90		90	16	10	5	160	
40*80	40	80	16	9	5	144	8
40*90		90	16	10	5	160	
42*70	42	70	18	8	5	144	8
42*80		80	18	9	5	162	
42*90		90	18	10	5	180	
45*70	45	70	20	8	5	160	8
45*80		80	20	9	5	180	
45*90		90	20	10	5	200	
45*100		100	20	11	5	220	
45*110		110	20	12	5	240	
50*70	50	70	20	8	5	160	8
50*80		80	20	9	5	180	
50*90		90	20	10	5	200	
50*100		100	20	11	5	220	
50*110		110	20	12	5	240	
60*80	60	80	22	9	5	198	8
60*90		90	22	10	5	220	
60*100		100	22	11	5	242	
60*110		110	22	12	5	264	
60*120		120	22	13	5	169	